

The purpose of containment equipment

- Reduced the risk of fire
- Protected personnel and facilities
- Identify, organize, and segregate dangerous liquids
- Compliance with regulations
- Improved efficiency
- Improved company image

Types of containment equipment

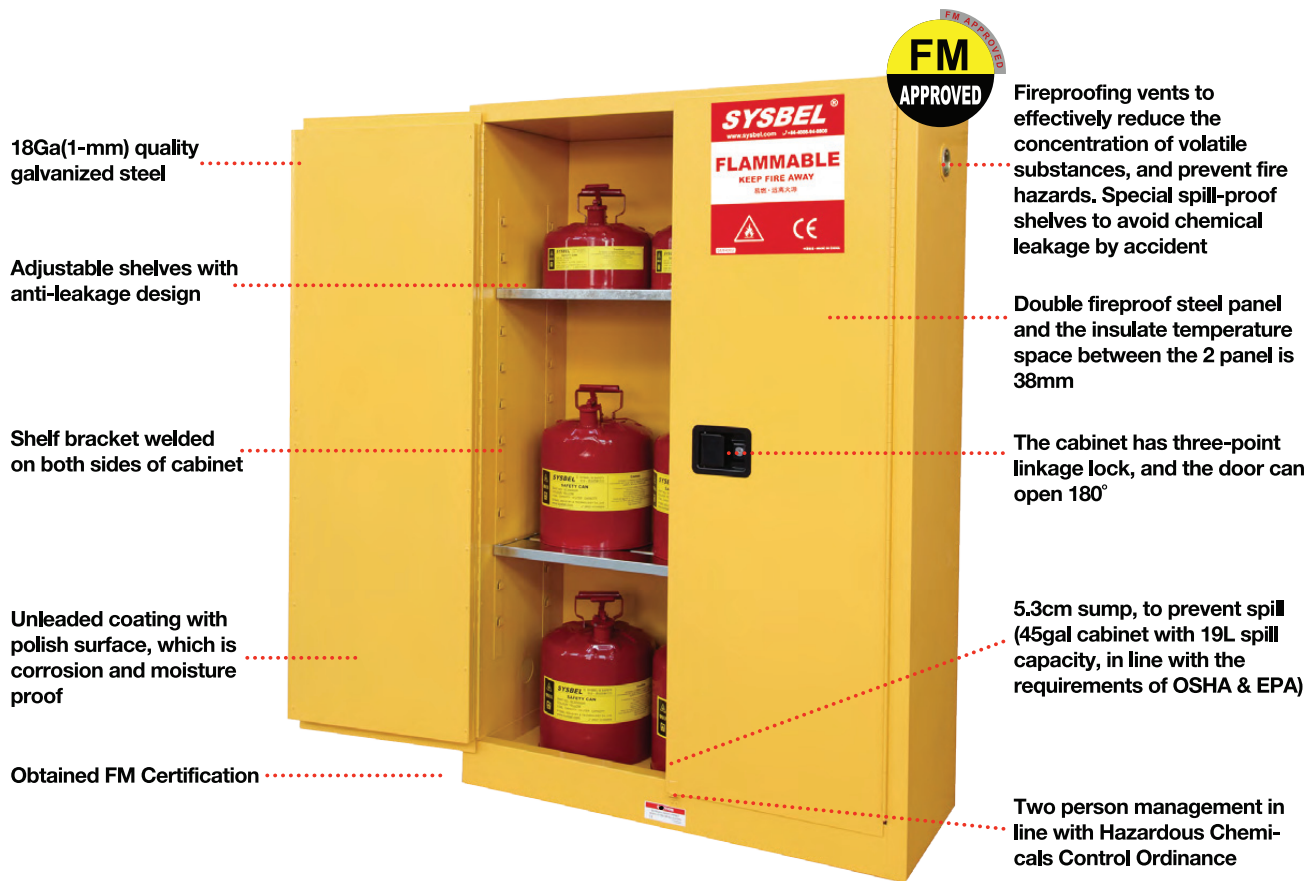
Safety cabinets - storage of flammable, combustible, corrosive & pesticides

Safety containers- Safety contain hazardous liquids and control vapors to reduce the risk of fire, protecting personnel and facilities

Utility products - Make cleaning parts and sub-assemblies with flammables and solvent safer, easier and more efficient

Containment systems - protect against our water contamination. And keep personnel safe from accidental slips due to leaks and spills

CONTAINMENT EQUIPMENT



It has acquired **FM & CE Certification** and is in strict compliance with FM Approval Standard for Storage Cabinets (Flammable and Combustible Liquids) Class Number 6050, OSHA 29 CFR 1910.106 of American Occupational Safety and Health Administration. NFPA CODE30 of American National Fire Protection Association and Hazardous Chemicals Control Ordinance of State Bureau of State Production Supervision and Administration.



Adjustable Shelves
Adjustable among every 6.5cm floor which can make full use of space



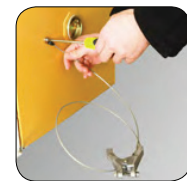
SYSTEX™ Three-point linkage lock:
Make lock safer; Flush paddle handle offers easy fingertip operation and resuces dangerous catches from passing traffic



Fireproofing ventilation hole: At both sides of the cabinet, one on the top and other on the bottom



The three-point bullets: Anti-static design structure



FM Approved Anti-Static Device:
Conductor grip combine the equipment with the cabinet to conduct the static to earth, thus to prevent fire accident

Colors for Flammable Liquid and Chemical Safety Cabinet



Yellow for flammable liquid



Red for combustible liquid



Blue for corrosive liquid



White for toxic chemicals



1. The cabinet is made of high-strength steel plate. The surface of the cabinet body is electrostatically sprayed with orange-stripe molding powder, which is easy to clean, scratch-resistant, impact-resistant and durable. Multi-layer fireproof gypsum board insulation is used in the cabinet compartment to achieve the purpose of fire prevention.
2. In normal use the semi-automatic door can be manually opened or closed; if a fire occurs, the temperature reaches 122°F (50°C) the built-in fuse connection system works, and the opening door will be automatically closed to protect the storage of items in the cabinet. The cabinet door has a damping screw to adjust the size of the door force of the switch.
3. The baffle plate of ventilation holes automatically close at 158°F (70°C) in a fire environment. The ventilation system can be connected with an exhaust pipe or a circulating air filter.
4. When fire occurs, the special heat-sensitive materials provided in door joints and all joints will automatically expand and fill the gaps to ensure that the interior of the cabinet is sealed.
5. Each door has a separate cylindrical lock to effectively prevent unauthorized use. The door is affixed with reflective warning labels in multiple languages. In the event of fire or power failure. It is very conspicuous under the flashlight.
6. The detachable bottom leakage groove is equipped with guide plate on the three sides, which is used together with the perforated inserts to effectively catch the liquid overflowing from the shelf. The container is placed on the perforated inserts to avoid being soaked in the bottom leaking groove.
7. It is configured 3 standard adjustable steel laminates, with an adjustable spacing of 32mm for each intervals, the load capacity of the laminate is 75kg. The turn-up height of laminate is 30mm, which prevents the small container from accidentally slipping off.
8. The bottom of the cabinet is provided with adjustable leveling feet, which can balance the cabinet even on uneven surfaces.
9. It is equipped with electrostatic grounding conductive port to facilitate the connection of static grounding conductors.
10. The safety cabinet complies with EN 14470-1 and complies with NFPA 30 and OSHA regulations. Among them, SE830450 passed TÜV independent fire test and obtained TÜV certification.

CONTAINMENT EQUIPMENT

TÜV Certification



SE860230



TÜV
Certification



SE830450



TÜV
Certification



SE890450



TÜV
Certification



TÜV Test Sample

EN.NFPA30.OSHA Certification



SE490190



SE890230



SE490300



WAB005

Safety Storage Cabinets

Fire resistance (min)	Door Type	Color	Certification	Ext dimension (H×W×D/cm)	Packing dimension (H×W×D/cm)	Standard adjustable laminate (block)	Load bearing of laminate (Kg)	Leakage tank capacity at the bottom (L)	Outlet connection diameter (mm)	Store a single largest container (L)	Volume (Gal/L)	Model
30	Double Door/Self-close	Yellow	EN14470-1	204×116×62.5	218×123×74	3	75	37	100	17	45/170	SE830450
60	Single Door/Self-close	Yellow	EN14470-1	204×60×62.5	218×67×74	3	75	18.5	100	9	23/87	SE860230
90	Double Door/Self-close	Yellow	EN14470-1	63×110×59	77×117×70.5	-	-	32	75	7.5	19/72	SE490190
90	Single Door/Self-close	Yellow	EN14470-1	204×60×62.5	218×67×74	3	75	18.5	100	9	23/87	SE890230
90	Double Door/Self-close	Yellow	EN14470-1	204×90×62.5	218×97×74	3	75	30	100	12	30/114	SE490300
90	Double Door/Self-close	Yellow	EN14470-1	204×116×62.5	218×123×74	3	75	37	100	17	45/170	SE890450

Moving Wheel

Name	Loading Capacity	Adjustable Cabinets	Model	Description
Moving wheel	600kg	SE490300、SE830450、SE890450	WAB005	Convenient for the cabinet to move indoors and can pass through normal room doors

*Selection tips: The colors of this series of products are yellow, blue, white, etc. Only the colors of the cabinet doors are different. The yellow series SKU is shown in the pictures above. For the blue series, please add "-B" after the SKU in the table above. White series Please add "-W" after the SKU in the table above.



Flammable liquid and chemical safety cabinets Choose colors and types for your needs

Flammable Cabinets

Yellow Safety Cabinet for storing flammable liquids (low and median flash point liquid, flash point<37.8°C)

Combustible Cabinets

Red Safety Cabinet for storing paintings, oil and other flammable liquids (high flash point liquid², flash point ≥ 37.8°C)

Corrosive Cabinets

Blue Safety Cabinet for storing corrosive liquids³

Toxic Cabinets

White Safety Cabinet for storing toxic chemicals

SYSBEL flammable liquid and chemical safety cabinets Specification

Volume (Gal/L)	Certification	Door type	Ext dimension (H×W×D/cm)	Packing dimension (H×W×D/cm)	Adjustable Shelves (Pcs)	Shelf Loading Weight(Kgs.)	N.W. (Kgs.)	G.W. (Kgs.)	Yellow Model	Red Model	Blue Model	White Model
4/15	CE	Single Door/Manual	56x43x43	72x53x53	1	50	27.3	35	WA810040	WA810040R	WA810040B	—
10/38	—	Single Door/Manual	64x59x60	82x69x69	1	50	34	48	WA810100	—	—	—
12/45	FM CE	Single Door/Manual	89x59x46	108x70x57	1	50	44.6	56	WA810120	WA810120R	—	WA810120W
22/83	FM CE	Single Door/Manual	165x60x46	182x70x57	3	50	74.3	90	WA810220	—	—	—
30/114	FM CE	Double Door/Manual	112x109x46	130x120x57	1	100	86.2	102	WA810300	WA810300R	WA810300B	—
45/170	FM CE	Double Door/Manual	165x109x46	182x120x57	2	100	114	133	WA810450	WA810450R	WA810450B	WA810450W
54/204	FM CE	Single Door/Manual	165x60x87	184x70x97	3	100	120.3	140	WA810540	—	—	—
55/207	CE	Double Door/Manual	165x86x86	182x96x96	1	100	154.8	179	WA810550	—	—	—
60/227	FM CE	Double Door/Manual	165x86x86	182x96x96	2	100	144.2	166	WA810600	WA810600R	—	—
90/340	FM CE	Double doors/Manual	165x109x86	182x120x96	2	100	164.2	186	WA810860	WA810860R	WA810860B	—
110/415	CE	Double Door/Manual	165x150x86	182x162x98	1	100	228.6	271	WA811100	—	—	—
115/434	CE	Double Door/Manual	165x150x86	182x162x98	2 (Left) 1 (Right)	100	227.6	270	WA810115	—	—	—

CONTAINMENT EQUIPMENT

One step forming polyethylene corrosive cabinet provide maximum safety storage protection for storing polyethylene or corrosive chemicals.

Sysbel polyethylene corrosive cabinet with seamless structure, ensure almost no leakage, and excellent performance of corrosion resistance and secondary leakage prevention and control. Double padlocks help to achieve double-person lock management, which is in line with EPA264.175 of the U.S. EPA, OSHA29CFR1910.1450 of the U.S. OSHA and Chinese Management of Hazardous Chemicals Ordinance (December 1, 2011 edition) On the cabinet doors, there are acidic and corrosive chemical warning labels to give your chemical storage management double guarantee.

Desktop Single Door Polyethylene Corrosive Cabinet ACP80001

4 Gal storage capacity; all-plastic and no-stopper design, excellent corrosion resistance; the cabinet shelf can be removed according to needs to improve space utilization; both sides of door can be hinged and door can be opened on both sides, to fully use table space; on both sides of cabinet, there are two vents, can open the lid for ventilation or discharge of pressure gas when necessary; double padlock design to meet the requirements for double-person lock management. The product is CE certified.

Undercounter Double door Polyethylene Corrosive Cabinet ACP80002

22 Gal storage capacity; all-plastic and no magnetic door holder design, excellent corrosion resistance; cabinet shelves can be removed according to needs to improve space utilization; on both sides of cabinet, there are two vents, can open the lids for ventilation or discharge of pressure gas when necessary; double padlock design to meet the requirements for double-person lock management. The product is CE certified.



ACP80001



It is CE approved, in line with EPA264.175 of EPA and OSHA29CFR1910.1450 of OSHA as well as Hazardous Chemicals Control Ordinance of SAWS.

* Tips: When strong corrosive chemicals in the storage cabinets the leak, chemical liquids will flow to the sump at the bottom of cabinets. Please use adsorbents and other spill control products to remove spills timely under the guidance of professionals.

SYSBEL Polyethylene Corrosive Cabinets

Capacity Gal/L	No. of doors & style	Ext Dimension (HxWxD/cm)	Packing Dimension (HxWxD/cm)	Adjustable Shelves	Volume of Bottom Leakage (Gal/L)	Shelf Loading Weight (kgs)	G.W. (kgs)	Model
4/15	One/Desktop	49x41x36	51x43x40	1	1.79/6.8	50	8.8	ACP80001
22/83	Two/Under counter	89x91x55	91x93x58	4	3.17/12	50	35.5	ACP80002

Product Supporting Parts

Name of part	For the type of Cabinet	Ext Dimensions (HxWxD/cm)	Models
Poly Shelf	ACP80001	3x38.8x30	ACPL001
Poly Shelf	ACP80002	3x48x43	ACPL002

(1) Please refer to list of Hazardous Goods (GB 12268-90) and List of Hazardous Chemicals of SAWS (OSHA Code 29CFR 1910.106 2002 edition)

* OSHA CODE 29 CFR 1910.106 specifies that for Class 1 & 2 flammable liquids the cabinet should hold less than 60 Gal.



Double padlock to achieve double-person lock management, to provide a higher level of security (padlock is on optional part)



Special design of cabinet top, which can also be used as a workable



Two vents on both sides of the cabinet, can open the lids for ventilation or discharge of pressure gas when necessary



On the door, there are warning labels to remind people to watch out



No magnetic door holder and excellent in corrosion resistance



Cabinet shelves can be removed to enhance space utilization



Both sides of ACP80001 doors can be hinged, and the door can be opened to both sides, to make full use of the space



Comply with OSHA29
CFR910.106&1910.144 of OSHA



Type

For Type

Red Oily Waste Can

Flashing point $\leq 80^{\circ}$ F(27° C) Trash
immersed in flammable liquids

SYSBEL Oily Waste Cans

A good helper for you to connect oily trashes!

In order to prevent fire risks and collect rags and cloth submersed in oil (flammable solvents, linseed oil and other flammable liquids), please use OSHA standard oily waste can. SYSBEL oily waste can has special lid whose opening angle is no more than 60° . The self-closing lid design ensures the can tightly closed in the absence of external force, to effectively control the three elements of fires*.

The oily waste can plays an important role!

1. Pedal switch control, requiring no manual operation
2. Unique body and base design of the can to effectively reduce the possibility of fire
3. Maximum lid opening angle is 60° , in accordance with Underwriters Laboratories (UL) safety standards
4. Scope: Red products for tarnish flammable liquid waste; yellow for tarnish combustible liquid waste

SYSBEL Oily Waste Cans

Capacity (Gal/L)	Ext Dimensions (HxD/cm)	Packing Dimensions (HxWxD/cm)	N.W. (kgs.)	G.W. (kgs.)	Red Model
6/22.6	40x30	46x42x42	4.5	6	WA8109100
10/38	46x35	52x47x47	6	7.5	WA8109300
14/52.9	51x41	58x51x51	7.5	9	WA8109500
21/79.3	60x47	66x56x56	11	12	WA8109700



CONTAINMENT EQUIPMENT



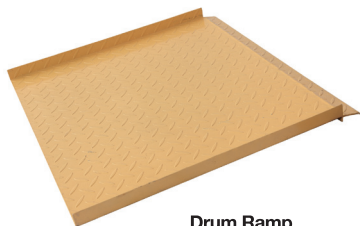
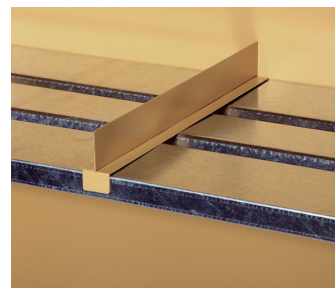
Safety Cabinet Parts



Shelf



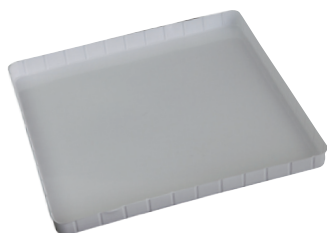
Shelf Divider



Drum Ramp



Drum Roller



Safety Cabinet Supporting Parts

Type	Name of part	For the type of Cabinet	Ext. Dimensions (HxWxD/cm)	G.W. (Kgs.)	Model	Functions
Shelve	Galvanized Steel Shelf	4 Gal	3x33x33	1.4	WAL040	More storage area divisions for diversified needs
	Galvanized Steel Shelf	12 Gal	3x49.5x35.5	2.4	WLA012	
	Galvanized Steel Shelf	30/45 Gal	3x100x36	5.4	WAL03045	
	Galvanized Steel Shelf	60 Gal	3x76.3x76.3	7.8	WAL060	
	Galvanized Steel Shelf	90 Gal	3x100x76.3	9.7	WAL090	
PVC Trays	PVC Tray	4 Gal Corrosive Cabinet	2x37x33	0.24	WAP040	Use with blue steel safety cabinet to provide extra spill protection
	PVC Tray	30 & 45 Gal Corrosive Cabinets	2x36x100	0.70	WAP03045	
Drum Roller	Oily Drum Safety Cabinets Roller	55/110/115 Gal	11.5x75x68	22.9	WADR001	Supporting storage for oily and chemical drums
Drum Ramp	Oily Drum Safety Cabinets Ramp	55/110/115 Gal	11.5x75x68	8.6	WAR001	Special tread design to increase friction, convenient for oily drum cart loading and unloading operations
Ground Connection	Antistatic Earth Lead	Steel Safety Cabinets	2mm, Length 1.5m	0.2	WA001	Promptly eliminate electrostatic changes, to prevent static sparks

Type	Name of part	For the type of cabinet	Ext Dimensions (HxWxD/cm)	Model	Functions
Shelf Divider	Safety Cabinet Shelf Divider 4G	4 Gal	6x3x33.4	WASD0040	Extend cabinet functions to enhance its performance
	Safety Cabinet Shelf Divider 12G	12 Gal	6x3x35.9	WASD0012	
	Safety Cabinet Shelf Divider 30 & 45G	30/45 Gal	6x3x36	WASD3045	
	Safety Cabinet Shelf Divider 60G	60 Gal	6x3x76.7	WASD0060	
	Safety Cabinet Shelf Divider 90G	90 Gal	6x3x76.7	WASD0090	